

Calico

# MUSE

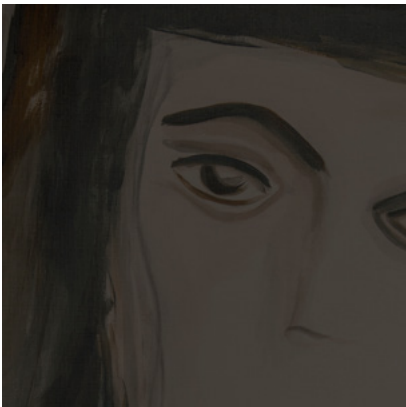
Tear Sheets



Muse is a celebration  
of the feminine in  
all of its forms.



ADA



CLEO



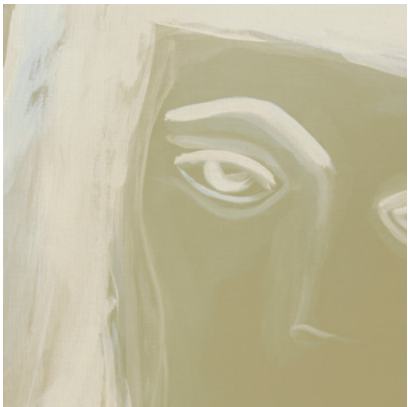
COCO



MARIE



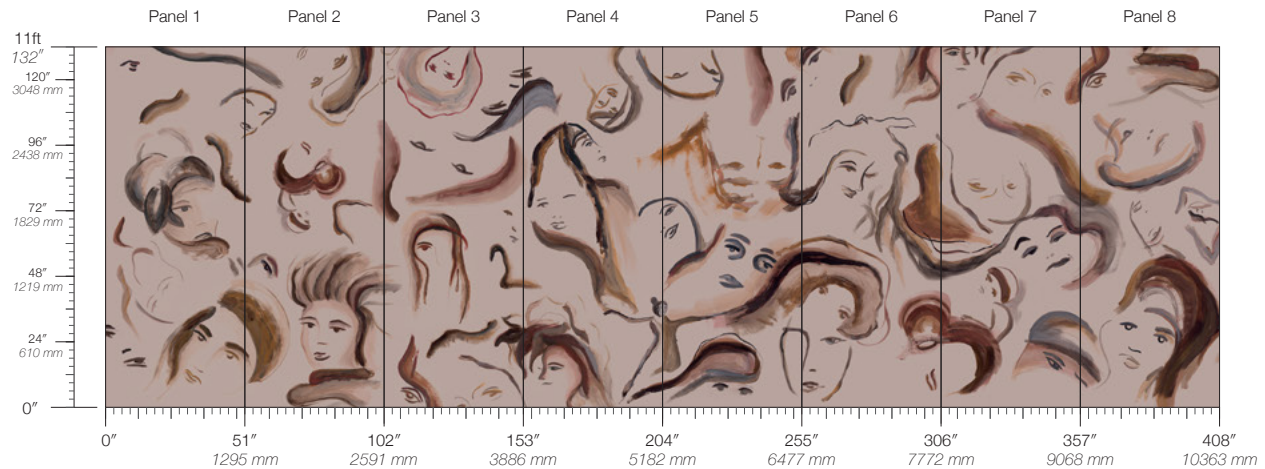
SIMONE



VERSA

# Muse Ada

Suitable for residential and commercial projects



**COLOR**

Ada

**ITEM**

2901

**CONTENT**

Type II Vinyl

**PANEL WIDTH**

51" / 1295 mm trimmed

**PANEL HEIGHT**

132" / 3353 mm standard

**REPEAT**

Non-repeating

**STOCK**

Made to order

**LEAD TIME**

4 weeks to print

**MINIMUM**

1 panel

**PRICE**

Available upon request

**ORIGIN**

USA

**DETAILS**

Custom options available

**ENVIRONMENTAL**

Low VOC

Cadmium & Lead Free

Formulation

**SPECS**

Commercial Vinyl face

Polyester/Cotton woven backing

20 oz per linear yard

620 g per linear meter

Woven surface texture

**TESTING**

(US) ASTM E84 Adhered Class A

(EU) EN 15102 Class B, s2

(CN) CAN/ULC-S102.2 Class A

CCC-W-408D Type II

WA Specification W-101 Type II

NFPA 286 Corner Burn Test Class A

**MAINTENANCE**

Water-based cleanser

**CONTACT**

sales@calicowallpaper.com

+1 718 243 1705

57 Lispenard Street

New York, NY 10013 USA

**DISCLAIMER**

Refer to our website to

see the full mural artwork.

Reference the physical sample

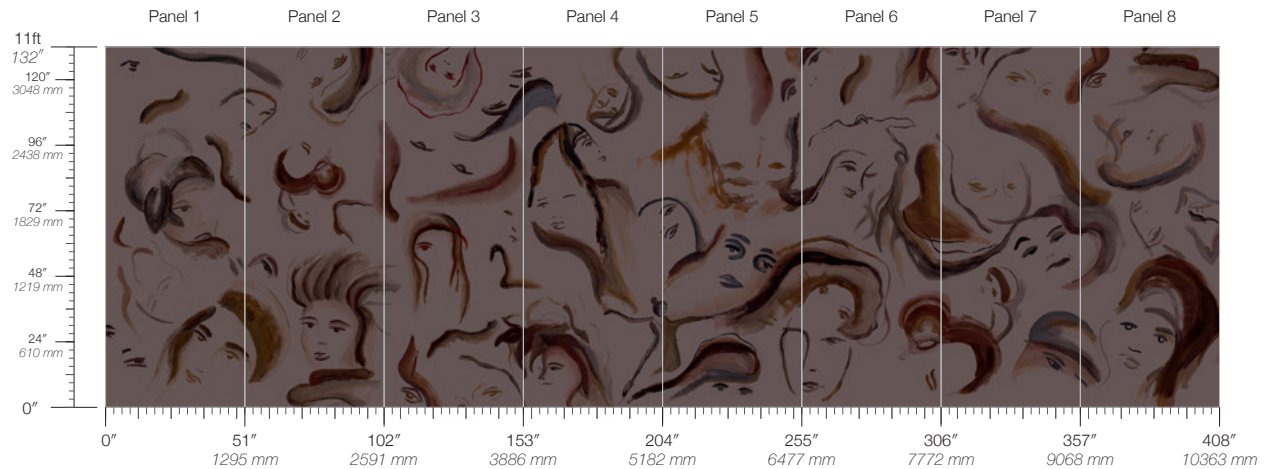
for color and texture. Panel

maps represent mural

artwork only.

# Muse Cleo

Suitable for residential and commercial projects



**COLOR**

Cleo

**ITEM**

2902

**CONTENT**

Type II Vinyl

**PANEL WIDTH**

51" / 1295 mm trimmed

**PANEL HEIGHT**

132" / 3353 mm standard

**REPEAT**

Non-repeating

**STOCK**

Made to order

**LEAD TIME**

4 weeks to print

**MINIMUM**

1 panel

**PRICE**

Available upon request

**ORIGIN**

USA

**DETAILS**

Custom options available

**ENVIRONMENTAL**

Low VOC

Cadmium & Lead Free

Formulation

**SPECS**

Commercial Vinyl face

Polyester/Cotton woven backing

20 oz per linear yard

620 g per linear meter

Woven surface texture

**TESTING**

(US) ASTM E84 Adhered Class A

(EU) EN 15102 Class B, s2

(CN) CAN/ULC-S102.2 Class A

CCC-W-408D Type II

WA Specification W-101 Type II

NFPA 286 Corner Burn Test Class A

**MAINTENANCE**

Water-based cleanser

**CONTACT**

sales@calicowallpaper.com

+1 718 243 1705

57 Lispenard Street

New York, NY 10013 USA

**DISCLAIMER**

Refer to our website to see the full mural artwork.

Reference the physical sample

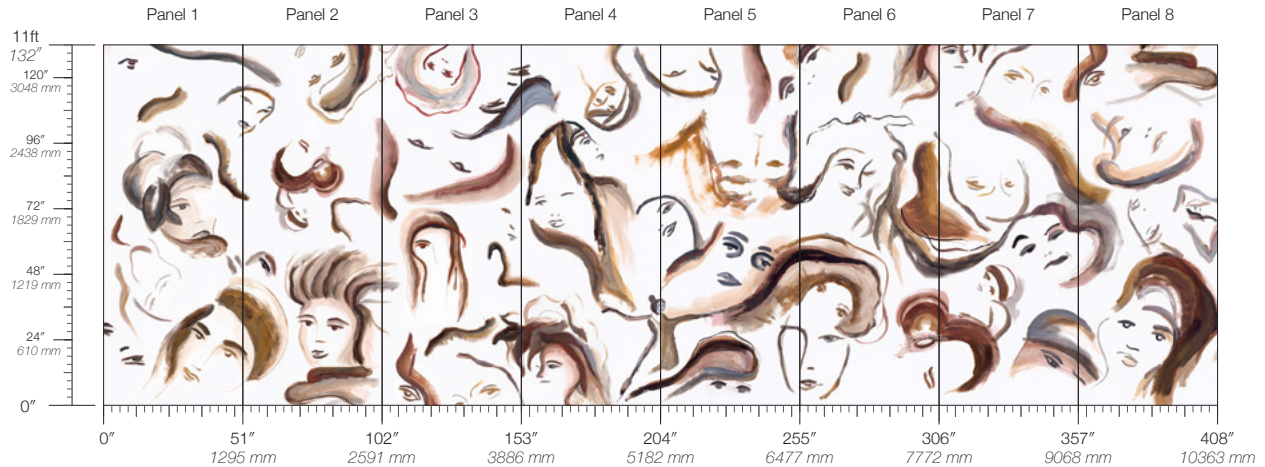
for color and texture. Panel

maps represent mural

artwork only.

# Muse Coco

Suitable for residential and commercial projects



**COLOR**  
Coco

**ITEM**  
2903

**CONTENT**  
Type II Vinyl

**PANEL WIDTH**  
51" / 1295 mm trimmed

**PANEL HEIGHT**  
132" / 3353 mm standard

**REPEAT**  
Non-repeating

**STOCK**  
Made to order

**LEAD TIME**  
4 weeks to print

**MINIMUM**  
1 panel

**PRICE**  
Available upon request

**ORIGIN**  
USA

**DETAILS**  
Custom options available

**ENVIRONMENTAL**  
Low VOC  
Cadmium & Lead Free  
Formulation

**SPECS**  
Commercial Vinyl face  
Polyester/Cotton woven backing  
20 oz per linear yard  
620 g per linear meter  
Woven surface texture

**TESTING**  
(US) ASTM E84 Adhered Class A  
(EU) EN 15102 Class B, s2  
(CN) CAN/ULC-S102.2 Class A  
CCC-W-408D Type II  
WA Specification W-101 Type II  
NFPA 286 Corner Burn Test Class A

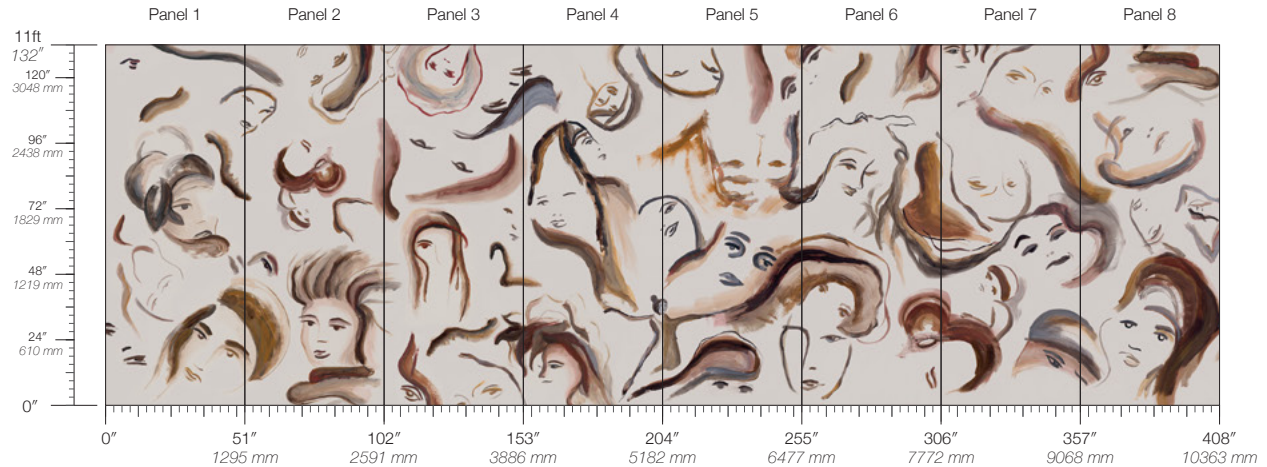
**MAINTENANCE**  
Water-based cleanser

**CONTACT**  
sales@calicowallpaper.com  
+1 718 243 1705  
57 Lispenard Street  
New York, NY 10013 USA

**DISCLAIMER**  
Refer to our website to see the full mural artwork. Reference the physical sample for color and texture. Panel maps represent mural artwork only.

# Muse Marie

Suitable for residential and commercial projects



**COLOR**  
Marie

**ITEM**  
2904

**CONTENT**  
Type II Vinyl

**PANEL WIDTH**  
51" / 1295 mm trimmed

**PANEL HEIGHT**  
132" / 3353 mm standard

**REPEAT**  
Non-repeating

**STOCK**  
Made to order

**LEAD TIME**  
4 weeks to print

**MINIMUM**  
1 panel

**PRICE**  
Available upon request

**ORIGIN**  
USA

**DETAILS**  
Custom options available

**ENVIRONMENTAL**  
Low VOC  
Cadmium & Lead Free  
Formulation

**SPECS**  
Commercial Vinyl face  
Polyester/Cotton woven backing  
20 oz per linear yard  
620 g per linear meter  
Woven surface texture

**TESTING**  
(US) ASTM E84 Adhered Class A  
(EU) EN 15102 Class B, s2  
(CN) CAN/ULC-S102.2 Class A  
CCC-W-408D Type II  
WA Specification W-101 Type II  
NFPA 286 Corner Burn Test Class A

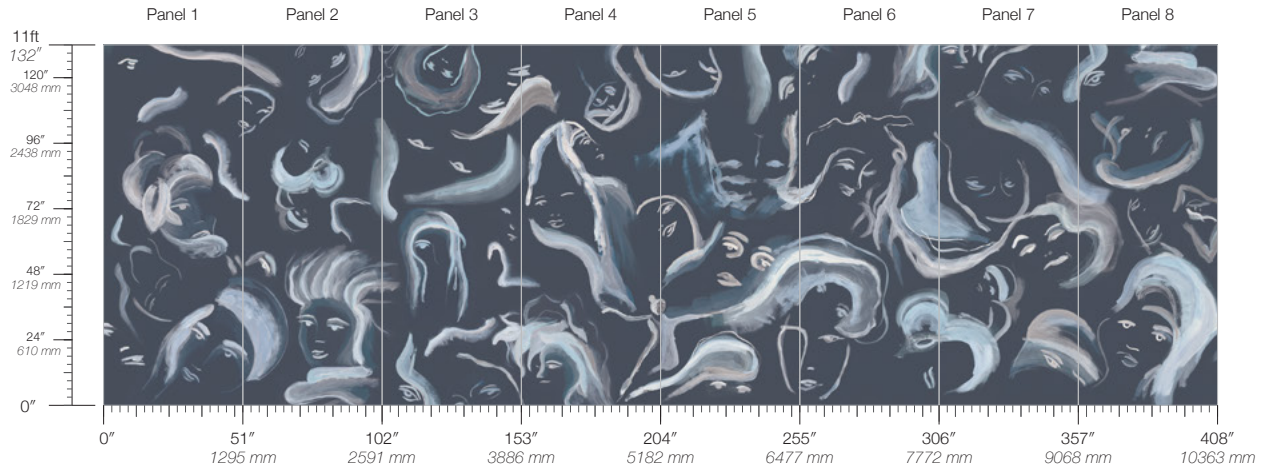
**MAINTENANCE**  
Water-based cleanser

**CONTACT**  
sales@calicowallpaper.com  
+1 718 243 1705  
57 Lispenard Street  
New York, NY 10013 USA

**DISCLAIMER**  
Refer to our website to see the full mural artwork. Reference the physical sample for color and texture. Panel maps represent mural artwork only.

# Muse Simone

Suitable for residential and commercial projects



**COLOR**  
Simone

**ITEM**  
2905

**CONTENT**  
Type II Vinyl

**PANEL WIDTH**  
51" / 1295 mm trimmed

**PANEL HEIGHT**  
132" / 3353 mm standard

**REPEAT**  
Non-repeating

**STOCK**  
Made to order

**LEAD TIME**  
4 weeks to print

**MINIMUM**  
1 panel

**PRICE**  
Available upon request

**ORIGIN**  
USA

**DETAILS**  
Custom options available

**ENVIRONMENTAL**  
Low VOC  
Cadmium & Lead Free  
Formulation

**SPECS**  
Commercial Vinyl face  
Polyester/Cotton woven backing  
20 oz per linear yard  
620 g per linear meter  
Woven surface texture

**TESTING**  
(US) ASTM E84 Adhered Class A  
(EU) EN 15102 Class B, s2  
(CN) CAN/ULC-S102.2 Class A  
CCC-W-408D Type II  
WA Specification W-101 Type II  
NFPA 286 Corner Burn Test Class A

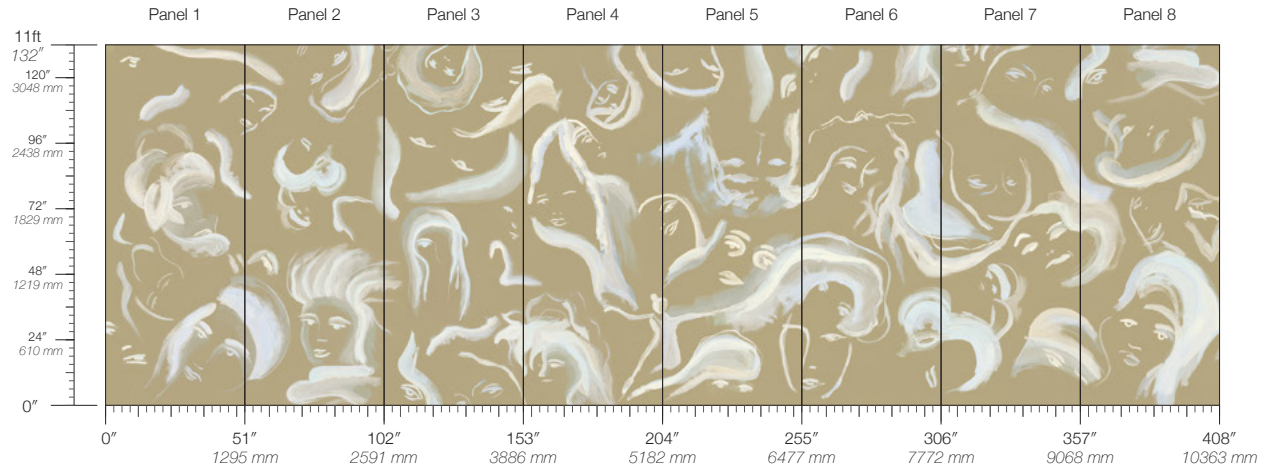
**MAINTENANCE**  
Water-based cleanser

**CONTACT**  
sales@calicowallpaper.com  
+1 718 243 1705  
57 Lispernard Street  
New York, NY 10013 USA

**DISCLAIMER**  
Refer to our website to see the full mural artwork. Reference the physical sample for color and texture. Panel maps represent mural artwork only.

# Muse Vera

Suitable for residential and commercial projects



**COLOR**

Vera

**ITEM**

2906

**CONTENT**

Type II Vinyl

**PANEL WIDTH**

51" / 1295 mm trimmed

**PANEL HEIGHT**

132" / 3353 mm standard

**REPEAT**

Non-repeating

**STOCK**

Made to order

**LEAD TIME**

4 weeks to print

**MINIMUM**

1 panel

**PRICE**

Available upon request

**ORIGIN**

USA

**DETAILS**

Custom options available

**ENVIRONMENTAL**

Low VOC

Cadmium & Lead Free

Formulation

**SPECS**

Commercial Vinyl face

Polyester/Cotton woven backing

20 oz per linear yard

620 g per linear meter

Woven surface texture

**TESTING**

(US) ASTM E84 Adhered Class A

(EU) EN 15102 Class B, s2

(CN) CAN/ULC-S102.2 Class A

CCC-W-408D Type II

WA Specification W-101 Type II

NFPA 286 Corner Burn Test Class A

**MAINTENANCE**

Water-based cleanser

**CONTACT**

sales@calicowallpaper.com

+1 718 243 1705

57 Lispenard Street

New York, NY 10013 USA

**DISCLAIMER**

Refer to our website to see the full mural artwork.

Reference the physical sample

for color and texture. Panel

maps represent mural

artwork only.